

Alan Brady

..... in his first season of rugby league, was the top try scorer for Wests in 1929 with eleven tries. The next best being four tries by Pony Redmond and Frank Matterson. Alan repeated this effort in 1930 with a tally of twelve tries and was very much integral to Wests winning the 1930 premiership.

In 1931, Alan fractured his wrist in the early rounds of the competition and had to sit out for a few weeks. Throughout the season, the Selectors alternated between Alan Brady and Ray Morris for one of the wing positions with Alan Ridley holding down the other wing position. It wasn't Alan Brady's best season but he was there for both of the Finals games that year.



Alan Brady Makes a dash for the line v Souths 1931

However, Alan was back in form in 1932, scoring eight tries but well and truly being eclipsed by Alan Ridley with eighteen tries. Nevertheless, he only missed one competition match but in the finals series, he played in the semi final win against Balmain before injury ended his season.

Alan, like most of the Wests players endured the difficulties of the 1933 season. He was one of eight stalwarts that formed the core of the team, but with thirty four players cycled through First Grade that season there was only ever going to be one result and that was collecting the wooden spoon.

Wests bounced back in 1934 and so did Alan Brady. He was one of three players that played all seventeen matches that season and scored ten tries, second only to Vic Hey with eleven. Interestingly, Alan moved to the Centre position from the Wing in 1934. It may have been in recognition that he had lost some pace or perhaps that his experience could be better utilised closer to the action. Whatever the reason it was a good move as Alan Brady and Wests took out their second premiership.

Canterbury Bankstown entered the competition in 1935, which saw a number of Wests players move across to the new Club as they were living within the newly defined residential boundaries of the Canterbury Club. Alan Brady was living in Clyde St Croydon Park on the northern side of the Cook's River, which appeared to be in Wests territory but would later prove to be in the Canterbury district. Notwithstanding, he remained with Wests in 1935 and had another successful season.

Alan played ninety five First Grade games with Wests between 1929 and 1935, and an additional seven Reserve Grade games to take his tally to one hundred and two games overall. He scored fifty seven First Grade tries for Wests in a golden period for the Club. Arguably there might have been better wing/ three-quarters in the game, but Alan Brady's contribution to Wests cannot be denied.

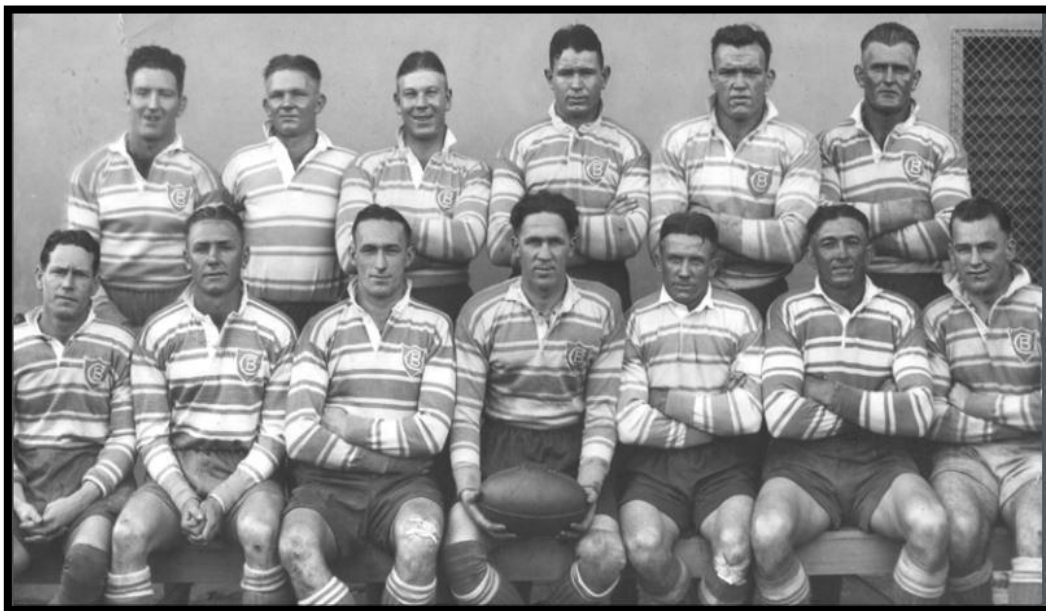
In September 1935 Canterbury Bankstown and Wests were both making a claim for Alan Brady's services. It was evident that he was living in the Canterbury Bankstown district, but Canterbury for some unexplained reason did not raise the issue at the start of the season. Under the NSWRL rules at the time, any player who had taken part in 100 First Grade games in metropolitan competitions with a Club, could continue to represent that Club if he so desired. Wests stated that Alan Brady had played 100 First Grade games with the Club, but Canterbury challenged the claim.

The NSWRL Management Committee investigated and ruled that two games, one against Illawarra in the Country Week carnival in 1929, and another against Newcastle in 1930 could not be regarded as First Grade matches in a metropolitan competition. This made Brady's total games with Wests numbering ninety eight. (Note: A review of records in recent times confirmed that Alan Brady played ninety five First Grade games with Wests.) In a blow to Wests, Alan Brady was lost for the 1936 season.

BRADY LOST BY WESTS
According to a decision of the N.S.W. Rugby League last night, Alan Brady, State representative, will not be eligible to play for Western Suburbs next season. Brady has now qualified for Canterbury-Bankstown.

Daily Telegraph 15 October 1935

Alan Brady slotted straight into the Canterbury team and was appointed captain from the opening match of the 1936 competition. Apart from Alan Brady, Canterbury recruited well for 1936 after a poor 1935 season. The First Grade team made the semi finals where they unfortunately went down to a very good Eastern Suburbs side. Apart from Alan Brady, other former Wests players in that team included, half back George Mason and the back row of Jack McConnell, Jack Hartwell and Billy Knowles. Knowles had replaced another former Wests player, Frank Sponberg who was out injured.



Canterbury Bankstown First Grade Semi Finalists 1936

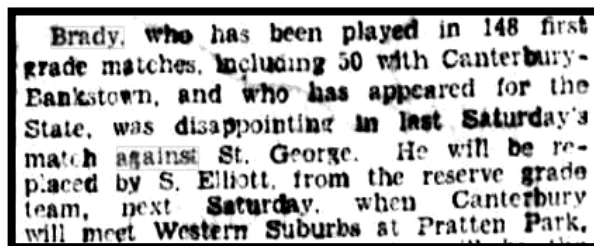
Back: Jack McConnell, Eddie Burns, Tom Kirk, Aub Mitchell, Henry Porter, Jack Hartwell.

Front: Jack O'Sullivan, Bill Porter, Joe Gartner, Alan Brady (C), George Mason, Bill Knowles Charlie Chignell

Alan Brady gave great value to Canterbury, missing only one match in his first two years with the Club. However it was in 1938 that his leadership and experience came to the fore, as he came back from injury to lead Canterbury to its first premiership, a win over Eastern Suburbs in the final. In

1939 Alan Brady missed most of the regular season but was once again there to lead Canterbury in the semi finals of the regular season as well as the finals of the State Cup.

By 1940 Alan was facing the end of his Grade career. He was appointed as the First Grade Coach and played the first three rounds of the 1940 season before retiring. As Coach of Canterbury, he once again guided the Club to the finals of the 1940 season. In the five seasons that Alan Brady was with Canterbury, the worst position the club finished on the competition table was fifth. The club made the semi finals on the other four occasions.



Brady, who has been played in 148 first grade matches, including 50 with Canterbury-Bankstown, and who has appeared for the State, was disappointing in last Saturday's match against St. George. He will be replaced by S. Elliott, from the reserve grade team, next Saturday, when Canterbury will meet Western Suburbs at Pratten Park.

SMH 8 May 1940

It is well known that in the early years of the Canterbury Bankstown Rugby League Club it drew heavily on former Wests players and officials. An interesting fact is that between 1935 and 1940, the new Club appointed former Wests players as the First Grade Coach in each year with the exception of 1936 when Frank Burge was the Coach. The former Wests players that coached during this period included Tedda Courtney, George Mason, Jim Craig, Jerry Brien and Alan Brady.

In 1941 Alan Brady was one of a number of former and current rugby league players that were part of a billiards exhibition challenge against Walter Lindrum. The contest was won by the first to reach 100 points, with the rugby league players receiving 95 points head start. Alan proved not to be a great billiards player as he was beaten 100-95 by Lindrum!

Alan Brady was married with two children and almost 32 years of age when he enlisted with the AIF at Paddington NSW in July 1941, for service in the Second World War. He served with the 1st Ordinance Field Park in the Middle East. This unit was responsible for providing ammunition, equipment and supplies to troops in the field. Alan served in the Middle East from September 1941 until March 1942. He returned to Australia after suffering from broncho-pneumonia.



Alan Brady 1941

In January 1943 Alan transferred to the 233 Australian Light Aid Detachment (LAD) and was promoted to the rank of Corporal. The LAD was an attached independent minor unit of the Royal Australian Electrical and Mechanical Engineers (RAEME). These units provided dedicated logistic support to every field unit of the Australian Army. He served in the Torres Strait theatre from April 1943 until October 1944. After a further break Alan went to Morotai and Ambon in the Dutch East Indies and was there from May until November 1945. Alan was discharged from the Army in December 1945.

Alan Brady was a resident of Port Macquarie, NSW, but died in Sydney in October 1969. He is buried at the Eastern Suburbs Memorial Park, Matraville, NSW, Plot RC1 - Roman Catholic FM 1, Position 359.